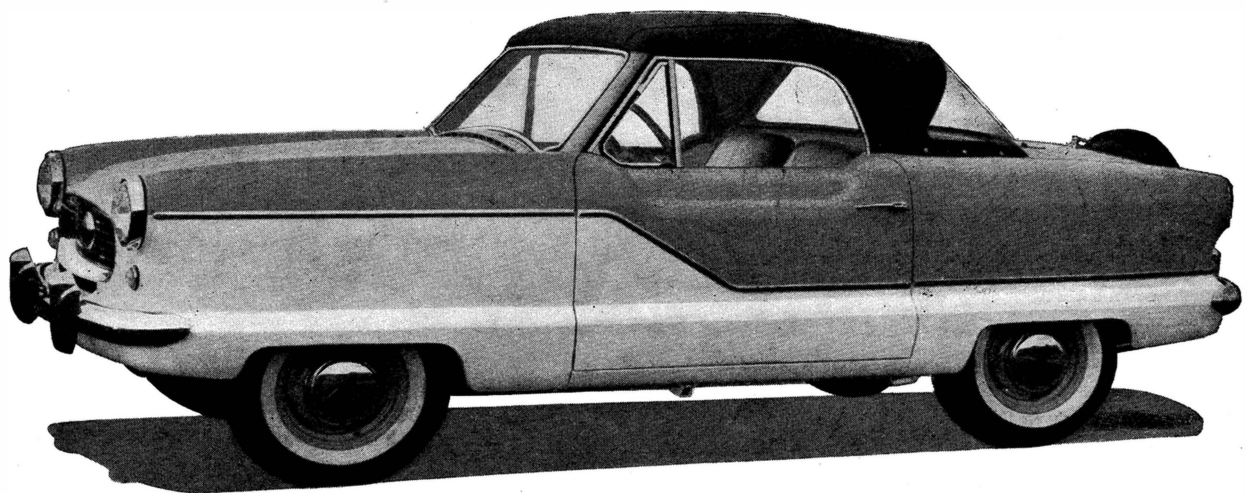


LONGBRIDGE MOTOR SPARES LTD

AUSTIN METROPOLITAN

NOVEMBER 2020



Telephone: 07495 443 549
longbridgeld@btinternet.com
www.longbridgemotorsparses.co.uk

INDEX:

Body fittings	Page 4
Body care	Page 4
Brakes	Page 4
Clutch	Page 4
Cooling system	Page 4
Diff	Page 4
Electrics	Page 4
Engine	Page 5
Exhausts	Page 6
Exhaust Fittings	Page 6
Fuel system	Page 6
Gearbox	Page 6
Ignition	Page 6
Speedo	Page 7
Steering	Page 7
Suspension front	Page 7
Suspension rear	Page 7
Wheels	Page 7

SURCHARGES:

We would ask for your co-operation on the return of exchange units, as we are only able to provide this service whilst we continue to receive a supply of reconditionable units. When the returned units stop, this service will no longer be able to operate. Please respond promptly. Your old unit, once reconditioned, could help a fellow **ENTHUSIAST** owner. It is up to you to help us to continue to provide this service!

ITEMS marked **EXCH** or **EX**, are exchange items, and, as such, incur a surcharge. This is fully refundable upon the return of your old unit, which must be in an undamaged, serviceable condition to qualify. The old unit must also be returned within a **90 DAY** period. Please return your old units promptly, taking care not to damage them upon removal.

KEY TO ABBREVIATIONS:

(SAL) = Saloon (EST) = Estate (L-H) = Left Hand (R-H) = Right Hand S/H) = Second Hand (RECON) = Reconditioned
(PRESS) = Pressed (REMAN) = Remanufactured (REP) = Repair (WH) = Wheel (CEN) = Centre (EXCH) = Exchange
(PNL) = Panel (MAN) Manual (AUTO) Automatic (QTR) = Quarter (P.O.A.) = Price On Application

Category	Part Description	PRODCO	Price
Body care			
BODY CARE	Pad, sound deadening pad 10" x 8" (price per pad)	BC 0007	£3.06
BODY CARE	Pad, sound deadening pad 20" x 8" (price per pad)	BC 0006	£5.31
BODY CARE	Spot weld drill, for removing spot welds	BC 0003	£14.19
BODY CARE	Stone clip for under body areas 1 Litre, Black	BC 0009	£7.74
BODY CARE	Gun, for stone clip	BC 0010	£46.64
Body fittings			
BODY FITTINGS	Mirror, door R-H flat glass anti-glazz pol-stain/steel	BF 0112	£30.53
BODY FITTINGS	Mirror, door L-H flat glass anti-glazz pol-stain/steel	BF 0111	£30.53
BODY FITTINGS	Mirror, stem, wing mirror use with BF 0114	BF 0113	£20.32
BODY FITTINGS	Mirror, head, wing mirror flat glass use with BF 0113	BF 0114	£13.23
BODY FITTINGS	Mirror, 2 BF 114 mirror stems & 2 BF 0113 mirror head	BF 0324	£75.22
Brakes			
BRAKES	Adjuster kit, front, for both sides	BR 0177	£43.25
BRAKES	Adjuster, rear, brake 1 per drum, all models	BRR 049	£19.23
BRAKES	Adjuster, rear, brake, SPECIAL PRICE FOR 2	BRR 0	£25.74
BRAKES	Boot, rubber, re whl cyl, (1 boot per cyl)	BR 0153	£9.49
BRAKES	Blood, screw, 3/8" UNF, (for fr & re whl clys)	BRF 036	£1.53
BRAKES	Clip & boot, for rear wheel cylinder, for 1 cylinder	BRR 113	£13.07
BRAKES	Clip & boot, for rear wheel cylinder, for 2 cylinder	BRR 0	£20.62
BRAKES	Cyl, master cyl, Dia 5/8"	BR 0065	£39.99
BRAKES	Cyl, master cyl repair kit, Dia 5/8"	BR 0162	£13.33
BRAKES	Cyl, wheel, fr, R-H, Dia 3/4", cast iron, 1956 onwards	BR 0151	£13.33
BRAKES	Cyl, wheel, fr, L-H, Dia 3/4", cast iron, 1956 onwards	BR 0150	£13.33
BRAKES	Cyls, wheel, fr, 2 R-H & 2 L-H, Special for four wheel cylinders, 1956 onwards	BR 0	£34.07
BRAKES	Cyl, wheel, fr, repair kit, Dia 3/4" (for 4 clys)	BR 0165	£15.69
BRAKES	Cyls, wheel, 4 fr, 2 rear clys & 2 whl clys clip kit, Special for six wheel clys & 2 clip & boot kits	BR 0	£55.46
BRAKES	Cyl, wheel, re, R-H or L-H, 3/4"	BR 0	£0.00
BRAKES	Cyl, wheel, re, repair kit, Dia 3/4" (for 2 cyl)	BR 0070	£0.00
BRAKES	Cyl, wheel, re, R-H or L-H, 3/4" PRICE FOR 1	BR 0	£9.92
BRAKES	Cyls, wheel, re, 2 rear wheel clys, 3/4", Special for 2 wheel clys	BR 0	£16.92
BRAKES	Cyl, wheel, re, repair kit, Dia 3/4" (for 2 cyl)	BR 0070	£9.99
BRAKES	Hold down kit, re, brake shoes, (4 pins & 4 springs)	BRF 067	£14.63
BRAKES	Hose, fr, brake hose, (OTY REO 2 per car)	BR 0065	£11.70
BRAKES	Hose, re, brake hose, (OTY REO 1 per car)	BR 0033	£16.57
BRAKES	Screw, drum, fr & re, (Qty 2 per drum)	BR 0039	£1.33
BRAKES	Screw, set screw & shake-proof washer, fr wheel cyl, 2 per cylinder req		£1.06
BRAKES	Shoes, fr, (set of 4) recond, exch	BR 0161	£59.99
BRAKES	Shoes, surcharge on old brake shoes (set of 4)	BR 0160	£30.64
BRAKES	Shoes, re, (set of 4) NEW	BR 0156	£42.27
BRAKES	Spring, front, brake shoes, 1 set of 4 spring	BR 0176	£27.11
BRAKES	Spring, rear, brake shoes, 1 set of 4 spring	BR 0159	£29.23
BRAKES	Switch, brake light switch	BR 0166	£21.00
BRAKES	Linings, fr or re brake Shoes, (set of 4 linings) (10 holes per lining)	BR 0157	£39.30
BRAKES	Pedal, rubber, brake & clutch	BRF 032	£7.33
Cooling system			
COOLING SYSTEM	Belt, fan belt	COS 097	£14.66
COOLING SYSTEM	Blade, fan blade, S/hand	COS 153	£26.35
COOLING SYSTEM	Cap, radiator cap	COS 026	£3.07
COOLING SYSTEM	Elbow, thermostat elbow, water outlet	COS 245	£33.99
COOLING SYSTEM	Gasket, thermostat	COS 052	£1.94
COOLING SYSTEM	Gasket, small elbow on side of cyl head, 1498cc, B ser	COS 210	£1.41
COOLING SYSTEM	Gasket, water pump	COS 039	£1.94
COOLING SYSTEM	Pump, water pump, (small propeller)	COS 090	£72.07
COOLING SYSTEM	Pully wheel, water pump, S/hand, 1498cc, B ser	COS 211	£30.53
COOLING SYSTEM	Stud, thermostat elbow water outlet	COS 105	£2.02
COOLING SYSTEM	Thermostat, 74c (cooler running)	COS 126	£9.33
COOLING SYSTEM	Thermostat, 82c (normal running)	COS 053	£9.33
COOLING SYSTEM	Thermostat, 88c (winter running)	COS 116	£9.33
COOLING SYSTEM	Hose, top hose sev 1 to ch No 10999	COS 212	£15.93
COOLING SYSTEM	Hose, top hose sev 2, 3, from ch No 11000	COS	£16.33
COOLING SYSTEM	Hose, bottom, upper with heater take off	COS 213	£13.34
COOLING SYSTEM	Hose, bottom, lower	COS 231	£16.32
Clutch			
CLUTCH	Bearing, release bearing, carbon thrust, Se 1, 2, 3, 4	CL 0033	£29.69
CLUTCH	Clip, release bearing to clutch fork	CL 0076	£1.94
CLUTCH	Cover, recondition, exch (pressure plate) Se 1, 2 to Eng 2G10000	CL 0131	£99.91
CLUTCH	Cover, recondition, exch (pressure plate) Se 1, 2 Eng 2G10000 on	CL 0132	£99.91
CLUTCH	Cover, recondition, exchange (pressure plate) Se 3, 4	CL 0033	£99.91
CLUTCH	Cover, surcharge	CL 0032	£43.79
CLUTCH	Clutch kit, cover, plate, bearing, 10 splines, Se 1, 2, to Eng 2G 100000	CL 0130	£171.66
CLUTCH	Clutch kit, cover, plate, bearing, 10 splines, Se 1, 2, Eng 2G 100000 on	CL 0179	£171.66
CLUTCH	Clutch kit, cover, plate, bearing, 10 splines, Se 3, 4	CL 0073	£166.41
CLUTCH	Clutch kit, surcharge	CL 0077	£49.62
CLUTCH	Cyl, master cylinder, 5/8"	CL 0069	£42.53
CLUTCH	Cyl, master cylinder repair kit, 5/8"	CL 0063	£14.20
CLUTCH	Cyl, slave cyl, NEW	CL 0067	£44.33
CLUTCH	Cyl, slave cyl repair kit	CL 0070	£10.17
CLUTCH	Hose, clutch slave cyl	CL 0065	£19.16
CLUTCH	Pedal, rubber, clutch	BRF 032	£7.36
CLUTCH	Plate, recondition, exchange, 10 splines, Se 1, 2	CL 0037	£47.33
CLUTCH	Plate, recondition, exchange, 10 splines, Se 3, 4	CL 0037	£47.33
CLUTCH	Plate, surcharge, 10 splines	CL 0036	£23.03
CLUTCH	Push rod, clutch slave cyl,	CL 0033	£16.24
Diff			
DIFF	Ball bearing, output, (OTY REO 2)	DF 0059	£32.47
DIFF	Ball bearing, pinion, outer, (OTY REO 1) to 1957	DF 0047	£32.33
DIFF	Ball bearing, pinion, inner, (OTY REO 1) from 1957	DF 0061	£25.53
DIFF	Gasket, diff	DF 0054	£6.03
DIFF	Seal, oil seal, diff nose	DF 0034	£7.60
Electrics			
ELECTRICS	Brushes, dynamo	EL 0034	£14.19

ELECTRICS	Brushes, wiper motor	EL 0042	£10.11
ELECTRICS	Brushes, starter motor	EL 0035	£11.17
ELECTRICS	cabl, starter cabl metropolitan	EL 0183	£39.59
ELECTRICS	Control box, (screw type terminals)	EL 0083	£30.34
ELECTRICS	Dipswitch, headlamps	EL 0147	£45.00
ELECTRICS	Dynamo, factory built, NEW	EL 0073	£69.99
ELECTRICS	Flasher unit,	EL 0078	£12.15
ELECTRICS	Fuse box	EL 0048	£26.45
ELECTRICS	Fuse, 35 AMP	EL 0090	£0.41
ELECTRICS	harness, wiring loom front half, engine compartment, 1957-60 R-H-D		£283.77
ELECTRICS	harness, wiring loom front half, engine compartment, 1957-60 L-H-D		£283.77
ELECTRICS	harness, wiring loom rear half, dashboard to rear lamps, 1957-60 R-H-D & L-H-D		£78.74
ELECTRICS	Motor, starter, recon, exch	EL 0028	£97.12
ELECTRICS	Motor, starter, surcharge	EL 0038	£58.07
ELECTRICS	Motor, wiper motor, recon, exch	EL 0150	£221.21
ELECTRICS	Motor, wiper motor, surcharge, REFUNDABLE UPON UNIT/INVOICE RETURN	EL 0149	£103.00
ELECTRICS	Solenoid, pull type	EL 0148	£50.11
Engine			
ENGINE	Bearing, spigot, 1498cc, B ser	EG 0251	£6.03
ENGINE	Bearing set, big end, 1498cc B Ser, + 0.000" STD (shells)	EG 0280	£40.29
ENGINE	Bearing set, big end, 1498cc B Ser, + 0.010" STD (shells)	EG 0279	£40.29
ENGINE	Bearing set, big end, 1498cc B Ser, + 0.020" STD (shells)	EG 0278	£40.29
ENGINE	Bearing set, big end, 1498cc B Ser, + 0.030" STD (shells)	EG 0277	£40.29
ENGINE	Bearing set, big end, 1498cc B Ser, + 0.040" STD (shells)	EG 0276	£40.29
ENGINE	Bearing set, big end, 1498cc B Ser, + 0.060" STD (shells)	EG 0290	£40.29
ENGINE	Bearing set, camshaft, (set of 3) STD	EG 0264	£31.28
ENGINE	Bearing set, mains, 1498cc B Ser, + 0.000" STD (shells)	EG 0285	£57.32
ENGINE	Bearing set, mains, 1498cc B Ser, + 0.010" STD (shells)	EG 0284	£57.32
ENGINE	Bearing set, mains, 1498cc B Ser, + 0.020" STD (shells)	EG 0283	£57.32
ENGINE	Bearing set, mains, 1498cc B Ser, + 0.030" STD (shells)	EG 0275	£57.32
ENGINE	Bearing set, mains, 1498cc B Ser, + 0.040" STD (shells)	EG 0281	£57.32
ENGINE	Boot, for dip stick, (rubber) B ser	EG 0245	£3.74
ENGINE	Bush, for rocker arm, 1498cc, B ser	EG 0257	£2.70
ENGINE	Camshaft, 1498cc, B ser, NEW	EG 0214	£148.85
ENGINE	Camshaft, reprofile, 1498, 1622cc	EG 1181	£89.21
ENGINE	Camshaft, reprofile, surcharge, 1498, 1622cc	EG 1182	£49.62
ENGINE	Cap, oil filler, pastic type, B ser (rocker box)	EG 0503	£13.38
ENGINE	Chain kit, timing chain, tensioner, gasket, felt oil seal, B ser	EG 0342	£30.53
ENGINE	Chain kit, timing chain, tensioner, gasket, rubber oil seal, B ser	EG 0341	£30.53
ENGINE	Chain, timing, duplex, 1200 & 1498cc	EG 0001	£15.11
ENGINE	Collar, for valve stem, inlet & exhaust, (16 per eng)	EG 0602	£3.68
ENGINE	Cyl, head, recon, exch, for lead free running, 1200cc	EG 0378	£386.40
ENGINE	Cyl, head, recon, exch, for lead free running, 1498cc, B ser	EG 0378	£386.40
ENGINE	Cyl, head, 1200 & 1498cc, Surcharge	EG 0376	£218.31
ENGINE	Cup, Valve top of spring, s/hand 1200 & 1498cc, B ser	EG 0648	£6.03
ENGINE	Dowel, flywheel, 1200 & 1498cc, B ser	EG 0357	£2.25
ENGINE	Drive, distributor spindle drive, 1200 & 1498cc, B ser	EG 0649	£54.70
ENGINE	Engine, full recon, exch, lead free running, 1498cc, B ser	EG 0365	£1,585.70
ENGINE	Engine, full 1498cc, Surcharge	EG 0370	£248.08
ENGINE	Engine, short block, recon, exch, 1498cc, B ser	EG 0368	£791.86
ENGINE	Engine, short block, 1498cc, Surcharge	EG 0372	£188.54
ENGINE	Filter, oil filter, spin on oil filter, 1498cc, B ser (for adaptor)	EG 0220	£8.13
ENGINE	Filter, oil filter, STD paper element, 1498cc B ser	EG 0270	£11.23
ENGINE	Fly, wheel assy, manual, recon, exch, 1498cc, B ser	EG 0643	£114.38
ENGINE	Fly, wheel assy, manual, surcharge on old unit, 1498cc, B ser	EG 0644	£89.31
ENGINE	Follower, for camshaft, (tappet standard) 1498cc, B ser	EG 0215	£8.07
ENGINE	Gasket, cyl head, 1200 & 1498cc, B ser	EG 0230	£20.32
ENGINE	Gasket, set cyl head, 1200 & 1498cc, B ser	EG 0227	£35.62
ENGINE	Gasket, set conversion, 1200 & 1498cc	EG 0219	£30.53
ENGINE	Gasket, mounting plate front, engine to fr plate, 1200 & 1498cc	EG 0221	£3.78
ENGINE	Gasket, manifold, 1200 & 1498cc, B ser	EG 0236	£3.37
ENGINE	Gasket, oil pump, 1200 & 1498cc, B ser	EG 0646	£2.02
ENGINE	Gasket, rocker cover, 1200 & 1498cc, B ser	EG 0234	£3.37
ENGINE	Gasket, side cover, 1200 & 1498cc (cork) (QTR REQ 2)	EG 0224	£2.25
ENGINE	Gasket, sump, 1200 & 1498cc, B ser	EG 0232	£6.03
ENGINE	Gasket, thermostat, 1200 & 1498cc, B ser	EG 0229	£1.94
ENGINE	Gasket, timing cover, front, 1200 & 1498cc	EG 0222	£3.98
ENGINE	Guide, valve, inlet & exhaust, 1200, 1498cc Bronze, LEAD FREE	EG 0600	£8.13
ENGINE	Key, camshaft timing gear, 1200 & 1498cc, B ser	EG 0645	£3.47
ENGINE	Key, crankshaft timing gear, 1200 & 1498cc, B ser	EG 0647	£7.68
ENGINE	Mounting, buffer, engine mounting front, 1200 & 1498cc, B ser	EG 0266	£10.11
ENGINE	Mounting, engine mounting front, 1200 & 1498cc, B ser	EG 0271	£37.04
ENGINE	Nut, cyl head stud, 1200 & 1498cc (QTR REQ 11)	EG 0639	£0.98
ENGINE	Piston set, 1498cc, HC STD	EG 0345	£273.08
ENGINE	Piston set, 1498cc, HC Plus 0.020	EG 0346	£273.08
ENGINE	Piston set, 1498cc, HC Plus 0.030	EG 0348	£273.08
ENGINE	Piston set, 1498cc, HC Plus 0.040	EG 0347	£273.08
ENGINE	Piston set, 1498cc, HC Plus 0.060	EG 0349	£273.08
ENGINE	Plate, oil filter, Purolator or Tecalemit	EG 0642	£10.11
ENGINE	Plug, core saucer type, 1498cc, B ser 1-5/16" (QTR REQ 5)	EG 0247	£2.76
ENGINE	Plug, core cup type, 1498cc, B ser 1-5/16" (QTR REQ 5)	EG 0588	£3.37
ENGINE	Plug, sump, drain plug & washer, 1498cc, B ser	EG 0640	£7.48
ENGINE	Washer, sump drain plug, (copper) 1498cc B ser	EG 0641	£2.02
ENGINE	Pump, oil pump, 1200 & 1498cc, B ser	EG 0273	£59.83
ENGINE	Pump, oil pump repair kit, (rotor & spindle) 1200 & 1498cc, B ser	EG 0333	£30.53
ENGINE	Push rod, 1200 & 1498cc, B ser	EG 0471	£6.03
ENGINE	Ring gear, flywheel starter ring, 1200 & 1498cc, B ser	EG 0356	£42.15
ENGINE	Ring set, 1200cc, STD	EG 0668	£99.13
ENGINE	Ring set, 1200cc, Plus 020 5 ring piston	EG 0669	£99.13
ENGINE	Ring set, 1200cc, Plus 030 standard bore size "	EG 0670	£99.13
ENGINE	Ring set, 1200cc, Plus 040 3 comp rings 2.0m/m	EG 0671	£99.13
ENGINE	Ring set, 1200cc, Plus 060 2 oil rings 4.0 m/m	EG 0672	£99.13
ENGINE	Ring set, 1498cc, STD	EG 0616	£99.13
ENGINE	Ring set, 1498 cc, Plus 020 5 ring piston	EG 0621	£99.13
ENGINE	Ring set, 1498 cc, Plus 030 standard bore size "	EG 0622	£99.13
ENGINE	Ring set, 1498 cc, Plus 040 3 comp rings 1.5m/m	EG 0623	£99.13
ENGINE	Ring set, 1498 cc, Plus 060 2 oil rings 4.0 m/m	EG 0615	£99.13

ENGINE	Ring set, 1498cc, STD.	EG 0197	£99.13
ENGINE	Ring set, 1498cc, Plus 020 5 ring piston	EG 0194	£99.13
ENGINE	Ring set, 1498cc, Plus 030 standard bore size "	EG 0622	£99.13
ENGINE	Ring set, 1498cc, Plus 040 3 comp rings 2.0mm	EG 0196	£99.13
ENGINE	Ring set, 1498cc, Plus 060 2 oil rings 4.0mm	EG 0188	£99.13
ENGINE	Rocker arm, NEW, 1200 & 1498cc, B ser	EG 0256	£24.41
ENGINE	Rocker arm, Recond, exch, 1200 & 1498cc, B ser	EG 0255	£13.23
ENGINE	Rocker arm, surcharge	EG 0254	£7.15
ENGINE	Rocker shaft ASSY, 1200 & 1498cc, B ser	EG 0603	£104.19
ENGINE	Rocker shaft ASSY, surcharge, 1200 & 1498cc B ser	EG 0604	£36.76
ENGINE	Seal, oil filler bowl to bolt outer seal, Purolator, 1200 & 1498cc	EG 0662	£1.94
ENGINE	Seal, oil filler bowl to bolt outer seal, Tecalemit, 1200 & 1498cc	EG 0661	£1.94
ENGINE	Seal, felt, oil filler bowl to bolt inner seal, Purolator, 1200, 1498	EG 0658	£1.94
ENGINE	Seal, felt, oil filler bowl to bolt inner seal, Tecalemit, 1200, 1498	EG 0660	£1.94
ENGINE	Seal, oil seal, timing cover, felt, 1200 & 1498cc, B ser	EG 0217	£3.37
ENGINE	Seal, oil seal, timing cover, rubber, 1498cc, B ser	EG 0004	£3.92
ENGINE	Seal, rocker cover box, 1200, 1498cc, (nut to box) (QTR RE 2)	EG 0253	£2.04
ENGINE	Seal, valve stem, (cup type) inlet, 1200 & 1498cc (fit to inlet only)	EG 0579	£1.94
ENGINE	Shaft, rocker shaft, 1200 & 1498cc, B ser	EG 0252	£25.33
ENGINE	Spring, oil pressure relief valve, 1200 & 1498cc, B ser	EG 0250	£3.98
ENGINE	Spring, valve single (exhaust & inlet) 1498cc, B ser	EG 0216	£3.06
ENGINE	Sprocket, camshaft (timing chain duplex) 1200 & 1498cc, B ser	EG 0212	£57.87
ENGINE	Sprocket, cranshaft (timing chain duplex) 1200 & 1498cc, B ser	EG 0213	£42.87
ENGINE	Stud, cyl head stud, long, 1200 & 1498cc, B ser	EG 0655	£3.37
ENGINE	Stud, cyl head stud, short, 1200 & 1498cc, B ser	EG 0654	£3.06
ENGINE	Stud, rocker shaft, long, B ser	EG 1034	£2.55
ENGINE	Stud, rocker shaft, short, B ser	EG 1035	£2.55
ENGINE	Stud, exhaust manifold to head, 1 stud at both ends, (QTR 2)	EG 0651	£1.59
ENGINE	Switch, oil pressure, 1200 & 1498cc, B ser	EG 0037	£6.96
ENGINE	Tensioner, timing chain, duplex, 1200cc, (rubber ring)	EG 0006	£2.66
ENGINE	Tensioner, timing chain, duplex, 1498cc, B ser	EG 0211	£14.09
ENGINE	Valve seat, insert, exhaust, 1498cc, B ser (use only with EG 0261)	EG 0575	£12.15
ENGINE	Valve seat, insert, inlet, 1498cc, B ser	EG 0576	£11.13
ENGINE	Valve, exhaust, 1498cc, B ser FOR LEAD FREE	EG 0261	£10.72
ENGINE	Valve, inlet, 1498cc, B ser	EG 0265	£12.23
ENGINE	Valve, oil pressure relief valve, B ser	EG 0246	£6.03
ENGINE	Washers, thrust, STD 1200cc (set of 4)	EG 0673	£26.45
ENGINE	Washers, thrust, +0.005 1200cc (set of 4)	EG 0674	£26.45
ENGINE	Washers, thrust, STD 1498cc (set of 4)	EG 0294	£10.11
ENGINE	Washers, thrust, +0.005 1498cc (set of 4)	EG 0293	£10.11
ENGINE	Washer-copper, adaptor oil feed pipe, re of eng. (QTR RE 1)	EG 0652	£1.94
ENGINE	Washer-copper, oil feed pipe to filter, inner	EG 0652	£1.94
ENGINE	Washer-flare, pressure relief valve cap	EG 0657	£1.94
ENGINE	Washer-lock tab, big end bolts, 1200 & 1498cc (QTR RE 4)	EG 0337	£1.94
ENGINE	Washer-lock tab, Camshaft, 1200 & 1498cc (QTR RE 1)	EG 0335	£2.02
ENGINE	Washer-lock tab, Cranshaft, 1200 & 1498cc (QTR RE 1)	EG 0340	£2.02
Exhausts Mild Steel			
EXHAUSTS	Front pipe	EX 0150	£68.64
EXHAUSTS	Silencer box	EX 0151	£105.65
EXHAUSTS	Tail pipe	EX 0152	£49.02
EXHAUSTS	Exhaust system		£200.98
Exhaust Fittings			
EXHAUST FITTINGS	Clamp, manifold clamp	EF 0030	£14.99
EXHAUST FITTINGS	Gasket, hot spot, inlet manifold to exhaust manifold	EF 0070	£12.23
Exhaust Manifold			
EXHAUST MANIFOLD	Manifold, exhaust, good s/hand	EM 0003	£171.41
Fuel System			
FUEL SYSTEM	Bearing, throttle shaft bulkhead to carb, 1200 & 1498cc	FS 0072	£19.16
FUEL SYSTEM	Diaphragm, gasket & spring, (Zenith) 1200 & 1498cc	FS 0226	£18.28
FUEL SYSTEM	Gaiter, accelerator shaft to bulkhead, 1200 & 1498cc	FS 0248	£12.77
FUEL SYSTEM	Gasket, fuel pump, 1200 & 1498cc	FS 0249	£2.02
FUEL SYSTEM	Gasket, fuel tank sender unit, 1200 & 1498cc	FS 0079	£2.25
FUEL SYSTEM	Pump, fuel, AC, manual, recond, exch, 1200 & 1498cc	FS 0074	£163.02
FUEL SYSTEM	Pump, fuel, AC, surcharge, 1200 & 1498cc	FS 0046	£92.15
FUEL SYSTEM	Pump, fuel, AC, repair kit, 1200 & 1498cc	FS 0054	£26.45
Fuel System Carb and Parts			
FUEL SYST CARB & PARTS	Carburettor, Zenith, recond, exch, 1200cc	FS 0246	£277.90
FUEL SYST CARB & PARTS	Carburettor, Zenith, recond, exch, 1498cc, B ser, 1956-58	FS 0123	£277.90
FUEL SYST CARB & PARTS	Carburettor, Zenith, recond, exch, 1498cc, B ser, 1958 on	FS 0123	£277.90
FUEL SYST CARB & PARTS	Carburettor, Zenith, surcharge, 1200 & 1498cc	FS 0245	£161.00
FUEL SYST CARB & PARTS	Needle valve, carb, 1200 & 1498cc	FS 0244	£16.97
FUEL SYST CARB & PARTS	Throttle spindle, carb, 1200 & 1498cc	FS 0241	£145.76
FUEL SYST CARB & PARTS	Throttle disc, carb,	FS 0239	£52.07
FUEL SYST CARB & PARTS	Diaphragm pack, carb, 1200 & 1498cc	FS 0238	£27.77
FUEL SYST CARB & PARTS	Gasket pack, carb, 1200 & 1498cc	FS 0237	£7.31
FUEL SYST CARB & PARTS	Service kit, carb, 1200 & 1498cc, gaskets, needle valve, diaphragm & spring	FS 0240	£28.83
FUEL SYST CARB & PARTS	Rebuild kit, carb, 1200 & 1498cc, gaskets, needle valve, diaphragm & spring, throttle spindle	FS 0241	£60.18
Ignition			
IGNITION	Barrel & key, (for ignition switch)	IG 0047	£15.11
IGNITION	Cap, distrib cap, 25D (screw type)	IG 0042	£23.54
IGNITION	Coil, ignition, (push in type)	IG 0018	£32.28
IGNITION	Coil, ignition, (screw type)	IG 0082	£33.60
IGNITION	Condenser, 25D	IG 0013	£6.09
IGNITION	Contact set, D2, 1955-56	IG 0038	£18.47
IGNITION	Contact set, 25D, 1956-61	IG 0037	£7.66
IGNITION	Contact set, 25D,	IG 0002	£6.63
IGNITION	Distrib, HC, recond, exch, screw type cap	IG 0052	£170.57
IGNITION	Distrib, HC, surcharge	IG 0042	£49.62
IGNITION	H.T. lead set, (screw type)	IG 0044	£22.04
IGNITION	Lead, low tension connector 25D distributor	IG 0045	£10.11
IGNITION	Pipe, vacuum control distributor, 1498cc	IG 0101	£45.59
IGNITION	Rotor arm, (distributor)	IG 0007	£5.63
IGNITION	Spark plug, Champion	IG 0021	£3.24
IGNITION	Vacuum unit, distributor HC	IG 0040	£59.44

Internal Trim			
INT TRIM	Carpet set, car, black	IT 0155	£227.33
INT TRIM	Carpet set, car, blue	IT 0156	£227.33
INT TRIM	Carpet set, car, green	IT 0157	£227.33
INT TRIM	Carpet set, car, grey	IT 0158	£227.33
INT TRIM	Carpet set, car, light red	IT 0159	£227.33
INT TRIM	Carpet set, car, dark red	IT 0160	£227.33
Gearbox			
GEARBOX	Ball bearing, 1st motion shaft (fr main bearing)	GB 0079	£28.48
GEARBOX	Ball bearing, 3rd motion shaft (re main bearing)	GB 0080	£26.45
GEARBOX	Bearing, cage roller, layshaft, (layshaft 3 holes) (QTY REQ 3)	GB 0074	£16.24
GEARBOX	Gaiter, clutch fork, gearbox	GB 0044	£12.15
GEARBOX	Gasket, set, gearbox	GB 0085	£8.68
GEARBOX	Gasket, front cover	GB 0050	£1.94
GEARBOX	Gearbox, recon, exch, 148cc, R-H-D	GB 0204	£367.15
GEARBOX	Gearbox, surcharge	GB 0205	£171.40
GEARBOX	Mounting, gearbox, R-H & L-H, (QTY REQ 2)	GB 0040	£7.15
GEARBOX	Mounting, gearbox, lower, (QTY REQ 1)	GB 0097	£8.07
GEARBOX	Seal, dust seal, gear change shaft (column change)	GB 0096	£3.32
GEARBOX	Seal, oil seal, gear change shaft (column change)	GB 0095	£19.75
GEARBOX	Seal, oil seal, gearbox, front	GB 0041	£10.11
GEARBOX	Seal, oil seal, gearbox, rear, Sev 2 & 3 (oil seal in metal housing)	GB 0173	£59.45
GEARBOX	Seal, oil seal, gearbox, rear, Sev 3 & 4 (oil seal only)	GB 0046	£10.11
GEARBOX	Seal, oil seal, speedo drive	GB 0037	£8.07
Steering			
STEERING	Red ASSY, steering side rod, fixed, R-H	ST 0121	£79.29
STEERING	Red ASSY, steering side rod, fixed, L-H	ST 0122	£79.29
STEERING	Track rod end, sold in 1 pair, early male type	ST 0123	£90.12
STEERING	Track rod end, sold in 1 pair, late female type	ST 0124	£90.12
STEERING	Seal, dust seal, steering box & idler	ST 0043	£2.41
STEERING	Seal, oil seal, steering box & idler	ST 0038	£6.03
Propshaft			
PROPSHAFT	U/J joint, with grease nipple (propshaft)	GUJ0106	£13.88
Speedo			
SPEEDO	Cable, speedo cable, RHD	SP 0046	£23.96
SPEEDO	Cable, speedo cable, LHD	SP 0050	£26.45
Suspension front			
SUSPENSION FRONT	Absorber, front	SUF 245	£117.34
SUSPENSION FRONT	Bearing kit, front hub	SUF 235	£31.20
SUSPENSION FRONT	Bush, king pin, bush, top	SUF 234	£8.15
SUSPENSION FRONT	Bush, shock absorber, front, (rubber) (4 bushes per shocker)	SUF 233	£3.48
SUSPENSION FRONT	Bush, wishbone top or bottom wishbone pans (4 bushes per pan)	SUF 033	£3.17
SUSPENSION FRONT	Bush, wishbone top or bottom wishbone pans SPECIAL PRICE FOR 16 BUSHES	SUF 0	£20.22
SUSPENSION FRONT	Cap-grease, retaining front hub	SUF 243	£14.28
SUSPENSION FRONT	Grease, nipple, 1/4" UNF angled, top of king pin	SUF 128	£1.94
SUSPENSION FRONT	Grease, nipple, 1/4" UNF straight, top & bottom, fulcrum pin	SUF 122	£1.33
SUSPENSION FRONT	Pan-wishbone, upper, recon, customers old unit	SUF 228	£63.06
SUSPENSION FRONT	Pan-wishbone, lower, recon, exch	SUF 231	£63.06
SUSPENSION FRONT	Pan-wishbone, lower, surcharge	SUF 230	£49.62
SUSPENSION FRONT	Pan-wishbone, lower, NEW	SUF 229	£117.59
SUSPENSION FRONT	Pin-cutter, fulcrum, top & bottom (fulcrum pin to king pin)	SUF 223	£5.84
SUSPENSION FRONT	Pin-fulcrum, top & bottom, (king pin to wishbone pan)	SUF 141	£22.36
SUSPENSION FRONT	Pin, inner special, wishbone pan, (2 per pan)	SUF 220	£10.11
SUSPENSION FRONT	Pin, inner special, wishbone pan, ASSY (2 per pan)	SUF 236	£14.19
SUSPENSION FRONT	Pin, washer special, inner wishbone pan, (2 per pan)	SUF 221	£6.03
SUSPENSION FRONT	Nut, locking, inner wishbone pan, (2 per pan)	SUF 222	£0.49
SUSPENSION FRONT	Nut-castle nut front hub	SUF 137	£2.76
SUSPENSION FRONT	Plug-end of fulcrum pin	SUF 223	£3.98
SUSPENSION FRONT	Seal, cork ring seal, fulcrum pin, top & bottom, (large)	SUF 225	£1.94
SUSPENSION FRONT	Seal, cork ring seal, fulcrum pin, top & bottom, (small)	SUF 149	£1.94
SUSPENSION FRONT	Seal, oil seal, fr, hub	SUF 226	£6.03
SUSPENSION FRONT	Seating, rubber front coil spring (2 per spring)	SUF 238	£0.00
SUSPENSION FRONT	Spacer, for front wheel, bearings	SUF 247	£20.40
SUSPENSION FRONT	Spring, front coil spring	SUF 246	£55.57
SUSPENSION FRONT	Stud, wheel stud, front	SUF 239	£4.64
SUSPENSION FRONT	Washer, front hub wheel bearing	SUF 248	£4.06
SUSPENSION FRONT	Washer, upper or lower fulcrum pin	SUF 240	£1.94
Suspension rear			
SUSPENSION REAR	Absorber, rear	SUR 176	£59.45
SUSPENSION REAR	Bearing kit, re, half shaft	SUR 170	£15.31
SUSPENSION REAR	Bush, shock absorber, re, top (rubber) (2 bushes per shocker)	SUR 172	£3.48
SUSPENSION REAR	Bush, rear leaf spring, front, (rubber) (QTY 2 per spring)	SUR 173	£13.93
SUSPENSION REAR	Bush, rear leaf spring, rear, lower (rubber) (qty req 2 per spring)	SUR 174	£2.71
SUSPENSION REAR	Bush, rear leaf spring, rear, upper (rubber) (qty req 2 per shackle)	SUR 195	£2.71
SUSPENSION REAR	Bush kit, SPECIAL PRICE FOR, 4 front spring bushes & 8 rear shackle bushes	SUR 0	£46.94
SUSPENSION REAR	Gasket, re, half shaft	SUR 124	£2.02
SUSPENSION REAR	Nut, retaining nut, re half shaft, hub bearing RHT	SUR 126	£11.23
SUSPENSION REAR	Nut, retaining nut, re half shaft, hub bearing LHT	SUR 125	£11.23
SUSPENSION REAR	O-ring seal, re, half shaft	SUR 128	£3.09
SUSPENSION REAR	Seal, oil seal, re, wheel hub	SUR 104	£3.82
SUSPENSION REAR	Seal kit, SPECIAL PRICE FOR 1 rear hub oil seal, 1 O-ring & 1 halfshaft gasket	SUR	£4.20
SUSPENSION REAR	Stud, wheel stud, rear	SUR 175	£4.64
SUSPENSION REAR	Washer/locking, re, hub	SUR 127	£2.76
Wheels			
WHEELS	Nut, wheel nut	WH 0008	£2.25
Windscreen			
WINDSCREEN	Blade, wiper blade, long (spon fitting type) R-H-D	WS 0190	£15.78